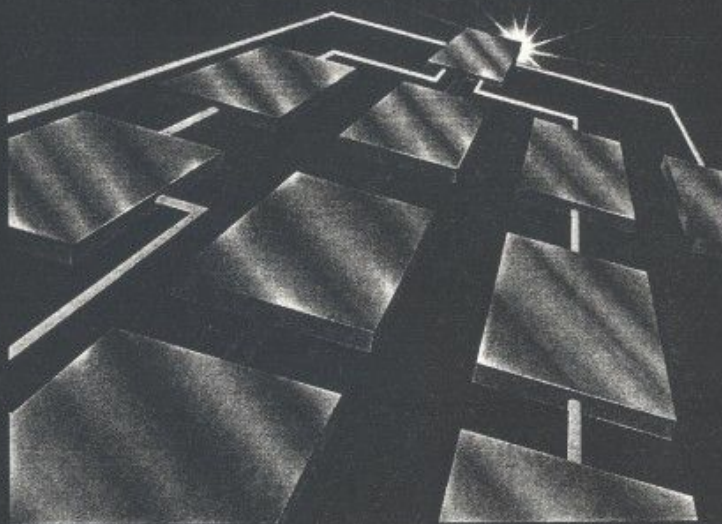


PROJECT WORKBENCH™

ADVANCED SYSTEM RELEASE 3.0



PROJECT WORKBENCH® ADVANCED SYSTEM RELEASE 3.0

A unique blend of functionality, power and ease-of-use

When deadlines, budgets and limited resources conspire against the success of your plan, it helps to have the world's most powerful micro-based project management system to back you up.

Since its introduction, the Project Workbench® system has been internationally recognized as the choice of professional managers in the microcomputer environment.



Today, Project Workbench software wins 8 out of 10 corporate evaluations and boasts an installed base of more than 45,000 systems worldwide.

Release 3.0 represents a quantum leap in speed, functionality and power. With more than 150 additional features, the new system offers unique scheduling and tracking capabilities unmatched by any other project management software.

For instance:

- ▼ 5 ways to load resources to tasks
- ▼ system-defined duration to "soak up" available resources
- ▼ period-based capture of actual resource usage and cost
- ▼ online electronic timesheet
- ▼ single and multiproject autoscheduling
- ▼ true resource utilization upload from subproject to master project
- ▼ context-sensitive Help
- ▼ a built-in text editor to annotate reports

What sets the system apart is more than an impressive collection of features. It is the way those features are implemented. For instance, only Project Workbench software displays both the Gantt Chart and Resource



Professional project managers worldwide depend on Project Workbench software to increase productivity and avoid crisis management.

Spreadsheet™ on the same screen. When one is altered, the other is dynamically updated. No more flipping between two or more screens to see the effect of changes on resources or your schedule.

WITH PROJECT WORKBENCH RELEASE 3.0 YOU CAN...

Start planning in less than an hour

Even if you're a novice, you can be up and planning simple projects with Project Workbench software right away. A brief Guided Tour diskette, two tutorials, online Help and extensive documentation simplify and shorten the learning curve.

Experienced project managers will find the Project Workbench system a pleasure to work with. The menus are structured to parallel the major functions of the project management process—planning, tracking, reporting, etc. Data entry forms are logically organized and easy to complete. In many fields, you simply press the Space Bar to toggle through a list of all possible entries. Toggle fields prevent errors and minimize the number of keystrokes

required to produce a plan. And powerful, context-sensitive Help is available when you need it from virtually every screen at the touch of a key.

Structure your plan

Unlike many systems, Project Workbench software is extremely flexible, conforming easily to your personal planning style. It is also forgiving, allowing you to enter partial or even conflicting data. You can skip fields and fill them in later. The effect of each change immediately displays on the screen.

We designed the Project Workbench system to handle project management in the "real world." You are never prevented from changing or replanning a project. You can start a task, stop it, and

Resource loading table and histograms for input and display of revised project plans.

Change Enter information on Resource Definition			
New Products			Day
Conduct Interviews			
Inter			
Inter	Abbrev TB	Name	Tom Benson
Tom Benson			
Units: Days per day			
Start	End/days	Avail	
8-22-88	7	1.0	
8-31-88	5	0.5	
9-08-88	2	1.0	
9-12-88	2	0.5	
9-14-88	
Total days			
FS Expand histogram			

Plan Track Manage-data Setup Report Communicate Quit											
Update Gantt Chart, resources, or dependency network											
New Products	Day	Resrc	22	29	5	12	19	26	3	10	
MARKET ANALYSIS											
Plan Analysis											
Define Objectives	6	JD									
Arrange Resources	6	JD									
Conduct Interviews											
Interview Corp Plng	11	LA	JD								
Interview Operations	14	TB	JD								
Interview Marketing	6	LA									
Consolidate Findings	10	LA	TB								
Utilization											
John Davis	4.0v	JD			2.4	6.2	2.0	2.9		0.6	
Tom Benson	5.0v	TB			2.0	4.1	5.5		2.4	2.2	0.
Larry Ashton	5.0v	LA			3.2	4.6			8.5	3.0	1.
Total days					2.4	8.2	9.3	13.0	11.5	5.2	2.

then start it again. You can fix task duration or leave it variable. The system can determine duration for you based on optimum resource utilization. This is why users everywhere tell us, "Project Workbench software is so easy to use. It thinks the way I do."

Maximize resource utilization and increase productivity

A unique and powerful feature found only in the Project Workbench system is the close coupling of the Gantt Chart and the Resource Spreadsheet on one screen. Here's how it works:

Below the Gantt Chart on the same screen is the Resource Spreadsheet, which shows how

each resource is being used on the project. As you create your preliminary schedule, the plan appears in outline form in whatever time scale you select (days, weeks, months, quarters, half-years or years). Simultaneously, you can see exactly how much of a resource is available, in use or remaining. By moving a task bar on the Gantt Chart, you can dynamically update the loading of resources. This allows you to identify and correct both over and underscheduling of resources. When you need to view more of the Gantt Chart or the Resource Spreadsheet, you can reconfigure the screen to enlarge

The tight coupling between the

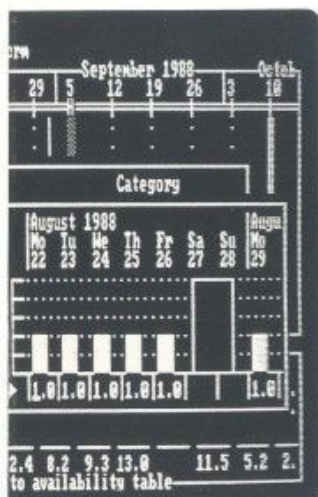
Gantt Chart and Resource

Spreadsheet provides a unique view

of critical project information,

making it easier to create and refine

resource-constrained projects.



or eliminate either one. No other project management software displays both your schedule and resource allocation on the same screen.



International financial leaders invest in Project Workbench software. ABT clients include major banks, brokerage houses, insurance corporations and Big-8 accounting firms.

Project Workbench software handles all types of resources—up to 200 per task—ensuring allocation of people, materials, equipment and budgets for maximum efficiency. To simplify planning even further, resources can be viewed on interactive spreadsheets or histograms in three ways: availability, utilization or unused availability.

Explore alternatives at the touch of a key

Another feature unique to the Project Workbench system is the ability to move or "shift" task bars directly on the Gantt Chart to quickly see the result such moves would have on resources. This allows you to easily adjust one or more tasks without having to re-enter any dates. The system does that for you!

The Project Workbench system can also automatically calculate your optimum schedule, ensuring resources are loaded for maximum efficiency. This powerful autoschedule function anticipates potential problems, resource overloads and scheduling conflicts—even those caused by other projects within your department.

Each time you change a project variable, this scheduling engine quickly calculates and displays a new project schedule—with or without resource constraints. Up to 40 times faster than other project management software, you can test "What if?" scenarios to your heart's

content. Select the optimum schedule or present management with several viable alternatives. If there are changes later on, as there always are, you can fine-tune your schedule manually or automatically. It's your choice. With the Project Workbench system, you are always in control.

Online electronic timesheet

enables you to capture actuals for

each individual resource

across all projects.

Track actual progress

Most project management systems focus on project planning. Yet 90% of the success or failure of your project depends on accurately tracking actual resource utilization, cost and progress. For this reason, Release 3.0 provides you with three ways to track from casual to formal, depending on your needs. The simplest level (by date of completion) is for small projects. The second (according to revised start/end dates or resource usage) is for larger

projects where tracking and reporting requirements are more formal. For complex, high-visibility projects, actual costs and work effort may be captured to reflect exact project status. As you revise your schedule, the Project Workbench system displays both

Capture actuals Enter actuals for designated resource

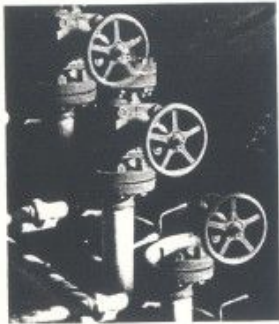
Project	New Products	Period	8-22-88	thru	8-28-88
Resource	JD John Davis	Units	Days		
Activity	Period actual	Estimate to comp	Forecast start	Forecast end	Stat
0010 MARKET ANALYSIS					
0100 Plan Analysis	3.0	3.0	8-24-88	9-02-88	Stat
0110 Define Objectives	1.0	1.6	8-22-88	9-07-88	Stat
0120 Arrange Resources					
0200 Conduct Interviews		2.5	9-06-88	9-20-88	
0205 Interview Corp Ping		3.0	9-08-88	9-28-88	
0210 Interview Operations					
Unplanned 8-22 to 8-28-88	1.0	1.0	8-22-88	8-31-88	Stat
Arrange Workspace		0.0	8-22-88	8-29-88	
Totals	5.0	11.1			

FS Histogram for resource/activity

your original or "baseline" plan and the most recent revision.

The Project Workbench system has the most sophisticated tracking features available today. Everything you can do in Plan mode, you can do in Track, and more. For example, you can track actual time spent (or cost incurred) and estimate-to-complete by time periods. You can also track using percent complete.

Actuals can be captured in the most convenient frequency or time period for each resource across all projects using individual online electronic timesheets. You can even print a turnaround timesheet for reporting purposes. And a new Replan function lets you reconstruct the remaining portion of any task at any time.



Industrial applications include engineering, research and development, manufacturing and petrochemical processing.

Manage all projects in your department or organization

Release 3.0 can handle all of your departmental or organizational project management needs. All system features function just as quickly and efficiently whether you are rolling up subprojects into a master project or dealing with large project groups.

Data can be imported and exported to other systems using a variety of file formats. Group reporting is also easily accomplished using Project Workbench software.

In addition, the Project Workbench system supports all major LANs, allowing you to exchange data over your Local Area Network. Project files can be shared while ensuring data integrity with an internal file-locking mechanism. The LAN version of the Project Workbench Advanced System also contains a communications feature for sending electronic mail messages to other Project Workbench users on your LAN. The system's full LAN support enables you to implement an effective and easy-to-use solution for all your project management needs, departmental or organization-wide.

Present a clear, complete picture to management

Using the Project Workbench system, your plan is well-documented, with appropriate information available to all management levels. Using the onscreen report preview

feature, you can scan reports and graphics, annotate or customize them with the built-in text editor, and then print detailed plans and executive summaries, complete with schedules, diagrams and other key documentation. Text and graphics combine to sell your proposals and report progress to management. Changes can be easily incorporated and new reports generated quickly. Project Workbench software offers users eight basic report formats.

Various combinations of sort and select options, plus periodicity, allow each basic report to be customized to meet your specific reporting needs and provide broad analytical capability.

Increase productivity and reduce costs

Recent user surveys report significant productivity gains, improved decision making and substantial cost savings since implementing Project Workbench software.

In every type of business, the system quickly pays for itself many times over. To further enhance the system's value, ABT offers the most comprehensive Client Support Program in the industry today.

The Project Workbench system provides onscreen report preview and editing capabilities.



ABT's CLIENT SUPPORT PROGRAM (CSP)

**Annual membership
entitles CSP
subscribers to all
these benefits:**

Guaranteed Free Upgrade

When ABT issues a new release, CSP subscribers automatically receive a free copy. In fact, we guarantee one upgrade during your subscription even if we have to extend it beyond the 12-month warranty period.

Applications Gateway™

CSP subscribers also receive the Applications Gateway program absolutely free. This software, a companion product to the Project Workbench system, creates an environment in which multiple projects and/or versions of the same project can be processed. Using this program, you can create special management reports and graphs using Project Workbench software by processing your management data with popular spreadsheet or database applications such as dBASE III Plus, LOTUS 1-2-3 and Paradox. You can also link files currently managed by other applications to Project Workbench system data.

XL/PW Interface

A seamless interface between Index Technology Corporation's Excelsior® and the Project Workbench - Advanced System, Release 3.0 is now available. CSP subscribers also covered by Index Technology Corporation's maintenance program may request this interface free of charge.

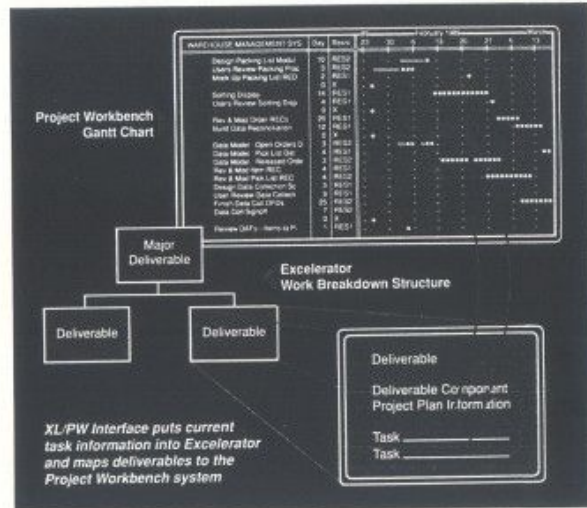
By combining the power of the Project Workbench system with the leading CASE product for system analysis and design, this new interface links the tool for "managing the job" with the tool for "doing the job." The result is improved control and increased productivity in the software development environment.

Applications Guide

To share unique uses of Project Workbench software found in our user community, ABT periodically issues an Applications Guide free to CSP subscribers. Each guide consists of helpful and useful templates, project interfaces, special applications or implementation standards. These productivity tools are specifically designed to increase your effectiveness using Project Workbench software.

Unlimited Hotline Support

CSP subscribers may also take advantage of ABT's expanded, professionally staffed Hotline, where unlimited technical advice on ABT's products is only a phone call away.



Free Newsletter Subscription

Our quarterly newsletter, *ABT PROJECTIONS*, details all happenings related to Project Workbench software, user groups and the client community. It also features information on new products, commonly asked Hotline questions and much, much more. CSP members receive newsletters free during their subscription period.

Extended Warranty

Membership in the CSP extends the Project Workbench Warranty for a full 12 months from date of CSP purchase.

PROJECT WORKBENCH AT A GLANCE

ABT regularly meets with key members of the client community to discuss their project planning and control needs. Regional and corporate user groups also provide ABT with a constant flow of information, ideas and requests for enhancements.

Release 3.0 was specifically designed to contain the features and functions our clients said they needed to plan, manage and control projects—quickly, easily and more efficiently than ever before!

EASE OF USE

Comprehensive manual

Project Workbench software is fully documented. The Study Guide contains tutorials for novices as well as experienced project managers, and sections detailing project management tips and techniques. The Reference Guide gives detailed information on menu commands, error messages, import/export, system specifications, even a glossary of project management terms. The online Guided Tour provides new users with a quick introduction to the system without requiring them to refer to a manual.

Logical menu structure

A simple menu structure paralleling major business functions (planning, tracking, reporting, managing data, communicating), makes the system extremely easy to use. Screens pop up quickly. Menus change rapidly. In addition, a faster, QuickKey™ mode lets the more experienced user bypass menus to move from screen to screen with far fewer keystrokes.

Clear, intuitive forms

Extra care was taken in designing each data entry form to follow the natural flow of information as you would normally write it down. Related data entry forms automatically appear in logical sequence.

Online Help system

Just point to the field in question and push F1. A window displaying context-sensitive Help information appears onscreen alongside the field in question. Help messages speak directly to the topic at hand in several levels of detail. And if you need more information, just browse through related topics while in the Help System.

Toggle fields

By using the Space Bar, all possible entries in a field display one at a time until you select one. Toggle fields make entering incorrect data impossible!

PLANNING

Work Breakdown Structure (Outliner)

Project Workbench software automatically outlines a project into three levels. You can also use the ID field or the subproject feature to create as many levels as you need, making each segment easier to manage.

Timescales

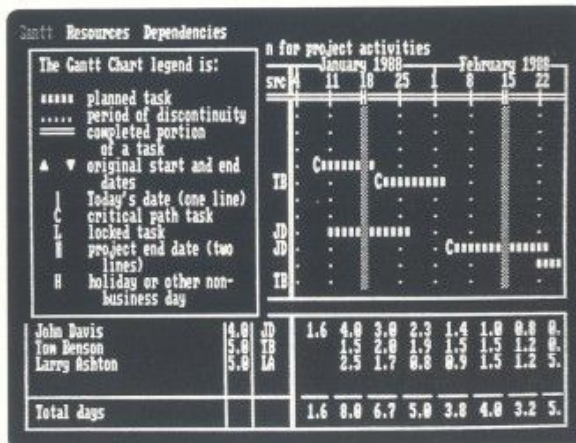
Your project can be expressed in days, weeks, months, quarters, six-month periods or years.

Global, project and resource calendars

The system provides a global calendar for setting up an organization-wide schedule, project calendars to override the global calendar for specific projects, and resource calendars that make it easy to schedule non-working days for individual resources.

Dependency links / CPM Network

You can set up dependencies among various tasks using simple cursor movement. No coding is required. The system automatically draws a network diagram and determines the critical path identifying task relationships, earliest start/end dates, durations and float.



Gantt Chart with context-sensitive

Help screen.

Opposite page - Resource Histogram

showing one of five loading patterns.



From skyscrapers to super highways, architects and construction managers use Project Workbench software to keep projects on time and within budget.

Autoschedule

Project Workbench software can automatically create your optimum project schedule, with or without resource constraints. Enter your project variables, then let Autoschedule create the most compressed schedule possible. Change a resource allocation or scheduling date, and the system instantly calculates a new optimized schedule—up to 40 times faster than other systems.

RESOURCE MANAGEMENT

Resource Spreadsheet

The system dynamically updates resource data as you enter project information on the Gantt Chart. It is continuously displayed on the Resource Spreadsheet directly below the Gantt on one screen, immediately alerting you to overload conditions.

Multiple views of resource data

You can choose any of three ways to view your resource data on histograms or spreadsheet: **availability** (based on the individual resource calendar), **utilization** (the amount of work assigned to the resource) or **unused availability** (work time not already assigned to other tasks). The Resource Spreadsheet can be toggled to display hours, days or cost.

Variable resource availability

You can allocate portions of a resource among multiple tasks or projects. This gives you the ability to deal with resources that are only partially available to a particular project.

Variable resource loading

Loading patterns allow you to assign people to a task the way you want them to work—while accommodating their availability.

Resources can be loaded five ways: front, back, fixed, uniform or contour. This feature maximizes resource utilization.

Variable task duration

Using this feature, you enter the start date and resources allocated to a task. The system calculates how long the task will take to complete. This, combined with variable resource loading, leads to increased productivity.

Resource histograms

Interactive resource histograms graphically depict resource data at both the task and project levels. Resource histograms are closely coupled to the planning process and interact directly with the Gantt Chart. Histograms help you visualize resource utilization and capacity in bar chart form.

TRACKING

Revised start/end dates

As you change your original project plan, the Gantt Chart displays both original and revised start/end dates. So, you can clearly see whether (and how far) a task or project has slipped behind or moved ahead of schedule.

Capture actuals by resource and period

The Project Workbench system not only tracks work (or percentage) completed, but also the actual work effort. You can capture work performed by each resource for any period you designate.

Estimate-to-complete rescheduling

Once you capture actuals, the system allows you to enter revised estimates of time required to complete an activity. Autoschedule then calculates a new end date based on actuals and your latest estimates. This powerful feature makes it easy to revise and recalculate your schedule at any time as the project progresses.

Track against baseline

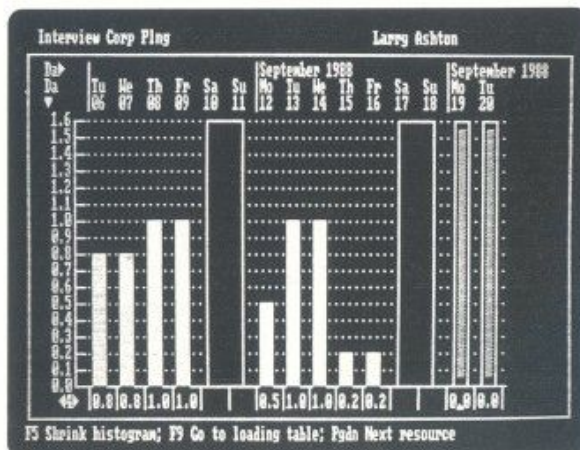
The Project Workbench system lets you enter baseline information for dates, work and budgets. Then, as you enter actuals, the system compares real progress and expenditures to your estimates. Reports can be generated showing where your project stands against original budget and schedule.

Electronic timesheet

The system offers an online electronic timesheet for recording all work performed by each resource on all projects. This allows you to record actual time down to the minute. You are not forced to record actuals in quarter or half-hour increments.

Replan remaining duration

This special feature allows you to replan the remaining portion of any task at any time, for any reason. It keeps you in complete control of your plan at all times.



MULTIPLE PROJECTS

Subprojects

The Project Workbench system's subproject feature lets you break large projects down into smaller, more manageable pieces. With it, you can summarize resource allocation (planned and actual) across multiple projects and define dependencies between projects based on a shared task or resource.

Master projects

Project Workbench software lets you consolidate plans, resources, projects, activities and tasks into a master project promoting more effective management. Multiple projects can be summarized in a single report.

Groups of projects

This feature gives the big-picture view, departmentally or across your entire organization. Key functions such as time capture, autoschedule and reporting are all operational at the group project level.

LAN support

The LAN version of Project Workbench-Advanced System, Release 3.0 is compatible with many popular LANs, including AT&T Starlan, Banyan Vines, IBM PC Net, IBM Token Ring, Microsoft MS-NET, Novell NetWare 2.0a or higher, 3COM, MS-NET/Net BIOS compatibles, and DECnet with PCSA option.

REPORTING

Standard report formats

Reports available on Project Workbench system include: Gantt Chart, CPM Network, Dependency Definition Diagram, Activity Plan, Activity Dependency, Activity Status (for both work effort and cost) and a turnaround Actuals Capture Worksheet. A wide range of sort and select options allows you to quickly and easily customize these basic formats to meet your specific reporting needs. For example, reports can be sorted according to resource, priorities, float, start dates, end dates, date ranges, etc. A built-in text editor allows you to annotate reports as desired.

Onscreen report preview

Once you select and create the report you want, you can preview and edit it onscreen using the system's own text processor before printing a hardcopy or sending it to disk.

Built-in text editor

The Project Workbench system has a built-in text processor so you can create text to accompany or annotate the charts and reports created by the system. A "cut-and-paste" facility lets you merge text and visuals from different plans into customized reports.

Presentation graphics

Release 3.0 produces presentation-quality graphic displays of your project plans and resource utilization including a Gantt Chart, CPM Network, Dependency Definition Diagram, Loading Tables and Histograms. The system directly supports a wide variety of popular printers and the HP two and six-pin plotters. An interface to PlotTrak® offers additional timescaled graphics and expanded plotter support.

Database environment

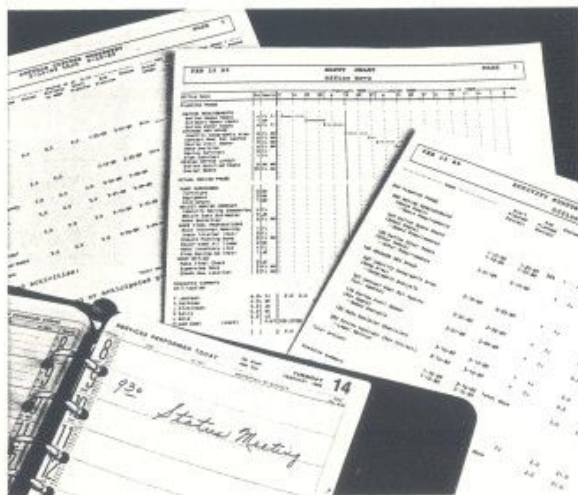
The Applications Gateway program, (free to CSP subscribers) enables Project Workbench users to create their own database environment in which multiple projects and/or multiple versions of the same project can be processed.



Government agencies and defense contractors select Project Workbench software for its unequalled tracking capabilities and reporting accuracy.

TECHNICAL SPECIFICATIONS

The Project Workbench - Advanced System, Release 3.0 is available on 5 1/4" or 3 1/2" diskettes and runs on the IBM PC, XT, AT, PS/2 and compatibles; IBM 3270 PC; Wang PC; DEC Rainbow and DEC VAX (via Virtual Microsystems PC/AT Bridge) and on a DEC VAXmate. IBM PCs and compatibles require PC-DOS or MS-DOS 2.1 or higher. Minimum 512K RAM; 640K RAM or a hard disk is recommended but not required.



Customize standard report formats

with extensive sort and select filters

to fit your exact needs.

PROFESSIONAL SERVICES

Training and consulting services

*A complete range
of educational
programs is
available from
the ABTeam.*

One of the most comprehensive training and consulting programs of any software firm in project management today is offered by ABT. Classes on Project Workbench® software and project management, from novice through executive levels, are available. Conducted onsite at client locations and through an extensive schedule of public seminars held in ABT's New York Training Center and major cities throughout the country, some of our most popular courses include:

Project Management Concepts and Techniques

This course combines an education in basic project management concepts with the use of Project Workbench software. Ideal for newly appointed project managers, team members and functional managers whose departments provide support to projects.

Using Project Workbench

This introductory, hands-on workshop teaches beginners how to use Project Workbench software.



Put ABT's project management expertise to work for you.

Moving up to Release 3.0

Designed for users of Release 2.2 who want to upgrade to Release 3.0. The focus is on differences between the systems as well as how to use and apply the dozens of new features contained in Release 3.0.

Multiple Projects / Departmental Management

Aimed at current users, this program teaches how to plan large projects or a number of related projects in a coordinated manner, using Project Workbench software as part of an overall departmental management control system.

Whether you're a novice or an experienced project planning professional, ABT now offers—or can custom design—a class to meet your training needs. For a free copy of our current class catalog and schedule, or information on how to obtain onsite training, contact ABT's Education Department today at 212-219-8945.

ABT consultants solve project management problems

Increase productivity in your group, department or organization. Put ABT's expertise in project management to work solving problems for you.

If you're thinking about standardizing project management within your department or organization, ABT can help. Working on a fee basis, our ABTeam of expert project management consultants can help you implement a departmental or organization-wide project management system tailored to your specific planning, tracking, reporting, data management and communications requirements. For details, contact the ABT Consulting Group at the New York Corporate Offices.



Applied Business Technology Corporation

361 Broadway, New York 10013
212-219-8945 FAX 212-219-3925
TELEX 4948951ABTNY

PW INTERFACE TO TIME LINE

Convert files from Time Line® to the Project Workbench® system quickly and easily using ABT's new interface

Now you can convert project files created in Time Line® to Project Workbench® files quickly and easily using a new interface by ABT! This interface was developed in response to numerous user requests for an easy way to move up to the power of the Project Workbench system.

The interface converts activity, dependency and resource detail as well as assignment information created in Time Line to a format that can be imported into Project Workbench - Advanced System.

Data is converted without extensive rekeying and without data loss. So you can take advantage of the speed and advanced features of Project Workbench software with a minimum of time and effort—and with the assurance that your data is intact!

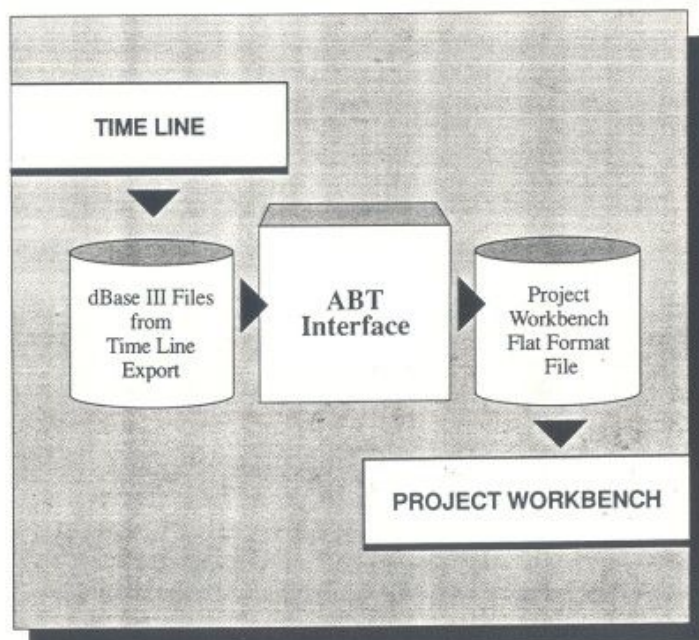
For a limited time only, this interface is being offered free of charge to registered Project Workbench users. To accommodate the current releases of both the Project Workbench system and Time Line, the interface is available in three versions.

Ordering information

To order, complete the enclosed order form and send to ABT's Order Department, or call your local dealer. Be sure to specify the correct version.

PW Interface converts data	from Time Line	to Project Workbench*
TL 2022	2.0	Release 2.2
TL 2030	2.0	Release 3.0
TL 3030	3.0	Release 3.0

* Advanced System only



Applied Business Technology Corporation

361 Broadway, New York 10013
212-219-8945 FAX 212-219-3925
TELEX 4948951ABTNY

Project Workbench is a registered trademark of Applied Business Technology Corporation. Time Line is a registered trademark of Synamtec Corporation.

PW INTERFACE TO TIME LINE

Convert files from Time Line® to the Project Workbench® system quickly and easily using ABT's new interface

Now you can convert project files created in Time Line® to Project Workbench® files quickly and easily using a new interface by ABT! This interface was developed in response to numerous user requests for an easy way to move up to the power of the Project Workbench system.

The interface converts activity, dependency and resource detail as well as assignment information created in Time Line to a format that can be imported into Project Workbench - Advanced System.

Data is converted without extensive rekeying and without data loss. So you can take advantage of the speed and advanced features of Project Workbench software with a minimum of time and effort—and with the assurance that your data is intact!

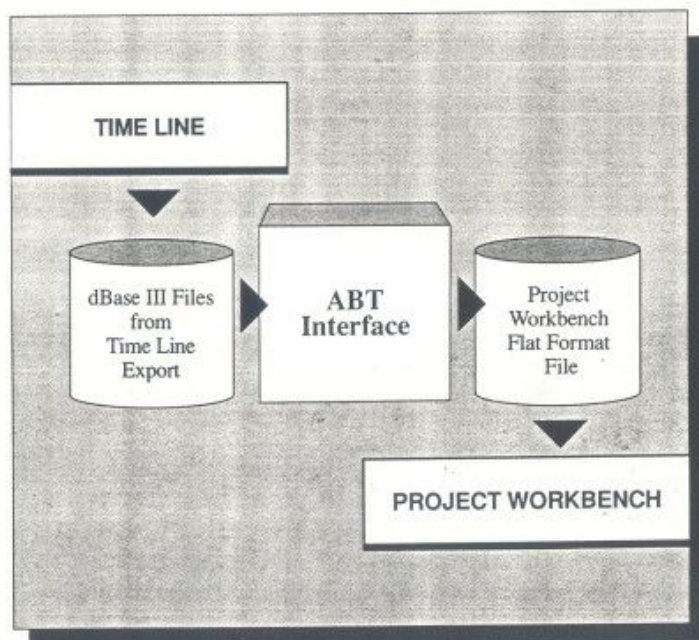
For a limited time only, this interface is being offered free of charge to registered Project Workbench users. To accommodate the current releases of both the Project Workbench system and Time Line, the interface is available in three versions.

Ordering information

To order, complete the enclosed order form and send to ABT's Order Department, or call your local dealer. Be sure to specify the correct version.

PW Interface converts data	from Time Line	to Project Workbench*
TL 2022	2.0	Release 2.2
TL 2030	2.0	Release 3.0
TL 3030	3.0	Release 3.0

* Advanced System only



Applied Business Technology Corporation

361 Broadway, New York 10013
212-219-8945 FAX 212-219-3925
TELEX 4948951ABTNY

Project Workbench is a registered trademark of Applied Business Technology Corporation. Time Line is a registered trademark of Syntec Corporation.

PLOTTRAK® INTERFACE

Great graphics for Project Workbench® users

Now you can present your project schedules in superior graphic form with ABT's proprietary link to SofTrak Systems' PlotTrak®, an industry recognized leader in project management graphics software. You can significantly enhance project presentations by using the interface to:

- ▼ print or plot a Time-scaled Network Logic Diagram and an enhanced Gantt Chart on A through E size paper.
- ▼ select from a wide range of plotters, including Hewlett-Packard, Houston Instruments, Calcomp, Ioline and Roland.

How does it work?

Through a series of menu commands, the interface extracts Project Workbench® data which has been loaded into ABT's Applications Gateway™ program and converts it into a format which can be read by PlotTrak. The entire process is performed quickly and easily. In a matter of minutes, users are in the PlotTrak environment where they may select a wide variety of plotting and printing options.

Each display can be printed or plotted on a multitude of output devices in a range of colors and paper sizes.

Time-scaled Network Logic Diagram

The Time-scaled Network Logic Diagram displays project task dependency relationships on a calendar scale. This allows you to see at a glance when tasks are scheduled and how they interrelate. Optional information which can be shown for each task includes activity number, early start date, early finish date, duration and float. The plot size can be scaled up or down as required for presentation purposes.

Gantt Chart

The Gantt Chart displays a task bar chart with one task plotted on each line. Tasks can be sorted on the Gantt Chart by task number or early start date. The critical path can be highlighted and total float displayed for non-critical tasks.

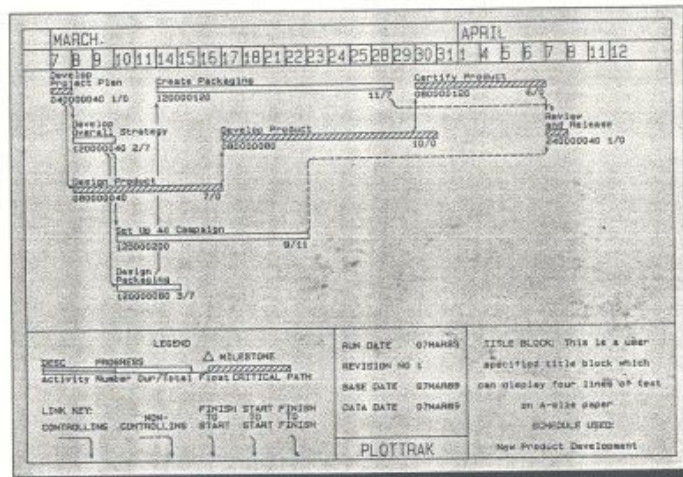
System Requirements

The PlotTrak Interface operates with PlotTrak 1.6 or 1.7 and Project Workbench - Advanced System.* Release 3.0 or 2.2 along with the corresponding version of the Applications Gateway program.

Ordering Information

The PlotTrak Interface is available to registered Project Workbench users and can be ordered from ABT for \$50 (interface only) or for \$295 (interface with PlotTrak software). To order, complete the enclosed form and send with your purchase order or check to ABT's Order Department, or call your local dealer. If you do not already have the Applications Gateway program, please indicate on the order form and ABT will supply a copy free of charge.

*IBM PC or 100% compatible versions only.



Time-scaled Network Logic Diagram



Applied Business Technology Corporation
361 Broadway, New York 10013
212-219-8945 FAX 212-219-3925
TELEX 4948951ABTNY

Project Workbench is a registered trademark and Applications Gateway is a trademark of Applied Business Technology Corporation. PlotTrak is a registered trademark of SofTrak Systems, Inc.

ORDERING INFORMATION

PlotTrak® Interface

I would like to order the PlotTrak® Interface to the Project Workbench® system, as specified below:

- ☐ Interface plus PlotTrak graphics software @ \$295 \$ _____
☐ Interface only (for users who already own PlotTrak software) @ \$ 50 \$ _____

TOTAL \$ _____

- ☐ I do not have a copy of the Applications Gateway program and would like one sent to me (for IBM or 100% compatible systems only).

Check one form of payment:

- ☐ Corporate Purchase Order enclosed ☐ Check enclosed

Authorized signature _____

Time Line® Interface

I would like to order the following version of ABT's Interface from Time Line® to the Project Workbench system, which is available free of charge to registered Project Workbench users.

- ☐ PW Interface TL 2022 - Converts data from Time Line 2.0 to Project Workbench Release 2.2
☐ PW Interface TL 2030 - converts data from Time Line 2.0 to Project Workbench Release 3.0
☐ PW Interface TL 3030 - Converts data from Time Line 3.0 to Project Workbench Release 3.0

Project Workbench®

- ☐ I am interested in Project Workbench software. Have an account representative contact me.
 Best time to call _____
 A formal evaluation is in progress ☐ Yes ☐ No
 The project management package we currently use is _____
☐ Send me a Guided Tour diskette (5 1/4" only).
☐ I need additional information on:
☐ Training programs--send a current education calendar.
☐ Consulting & professional services.
☐ ABT's Client Support Program.

All information must be completed:

- ☐ I am a registered Project Workbench user. ☐ I am not, but wish to be a registered user.
☐ Media size: 5-1/4" ☐ 3-1/2"
☐ I have Project Workbench - Advanced System, Release _____

Serial number _____

Purchase date _____

Name _____

Title _____

Company _____

Address (We cannot ship to a post office or box number.) _____

City _____

State _____

Zip _____

Telephone _____

Dealer's Name & Address (if applicable) _____

Complete form and mail or FAX to ABT's Order Department-- or call your local dealer.



Applied Business Technology Corporation

361 Broadway, New York 10013
 212-219-8945 FAX 212-219-3925
 TELEX 4948951ABTNY

Project Workbench is a registered trademark of Applied Business Technology Corporation. PlotTrak is a registered trademark of SofTrak Systems, Inc. Time Line is a registered trademark of Symantec Corporation.

ORDER FORM

PARTIAL CLIENT LIST

The Project Workbench® system is used extensively in many organizations throughout the world.

*Following is
a partial listing
of client
organizations by
industry, many
of which have
standardized on
the system:*

Aerospace/Defense

The Boeing Co.
The Charles Stark Draper
Laboratory, Inc.
E-Systems, Inc.
Ford Aerospace &
Communications Corp.
General Dynamics Corp.
Hamilton Standard (div.,
United Technologies Corp.)
Hughes Aircraft Company
Litton Systems, Inc.
Lockheed Corp.
Martin Marietta Corp.
McDonnell Douglas Corp.
Morton Thiokol, Inc.
Rockwell International
Corp.
Sikorsky Aircraft
Textron Inc.
United Technologies Corp.

Automotive

Ford Motor Co.
General Motors Corp.
Prestolite Wire Corp.

Banking

Arizona Bank
Bank of America National
Trust & Savings Assn.
Bank of New England, N.A.
The Chase Manhattan
Bank, N.A.
Chemical Bank
Citibank N.A.
Fannie Mae
First Interstate Bank
of California
First National Bank
of Chicago
First Nationwide Bank
of San Francisco
First Wachovia Corp.
Manufacturers Hanover
Corp.
Marine Midland Bank, N.A.
Maryland National Bank
Morgan Bank Delaware
Morgan Guaranty Trust
Co. of New York
National Westminster
Bank USA
Rainier National Bank
Security Pacific
National Bank
Southeast Bank, N.A.
Wells Fargo Bank, N.A.

Communications

AT&T Bell Laboratories
Bell Atlantic Corp.
C & P Telephone Company
of Maryland
Davis & Associates, Inc.
Ericsson Network
Systems, Inc.
GTE Data Services
Incorporated
Mountain Bell
Pacific Bell
Siemens Components, Inc.

Computer Hardware

Apollo Computer, Inc.
Compaq Computer
Corporation
Control Data Corp.
Digital Equipment
Corp.
International Business
Machines Corporation
NEC Information
Systems Inc.
Olivetti USA
Texas Instruments,
Incorporated
Unisys Corp.
Wang Laboratories, Inc.

Computer Software

The Continuum
Company, Inc.
Cullinet Software, Inc.
Hayes Microcomputer
Products, Inc.
Integral Systems
Index Technology
Corporation
Oracle Systems Corp.
Relational Technology, Inc.
Systematics, Inc.
Walker Interactive Systems

Construction Engineering

BE&K, Inc.
Black & Veatch
Engineers-Architects
FTN & Associates
Pennoni Associates Inc.
Ryland Group, Inc.

Consulting

American Management
Systems, Inc.
Arthur Andersen & Co.
Arthur Young & Company
Booz, Allen &
Hamilton, Inc.
Cap Gemini America, Inc.

Computer Task
Group, Inc.
Coopers & Lybrand
Deloitte, Haskins &
Sells
Electronic Data
Systems Corp.
Ernst & Whinney
Far West Consulting
Martin Marietta Data
Systems
Peat Marwick Main & Co.
Price Waterhouse

Finance

American Express
Company
The Boston Company, Inc.
Drexel Burnham Lambert
Fidelity Systems Co.
Goldman, Sachs & Co.
Merrill Lynch, Pierce,
Fenner & Smith
Incorporated
Nomura Securities Co. Ltd.
Paine Webber Incorporated
Charles Schwab & Co., Inc.

(Continued on reverse side)

CLIENT LIST CONTINUED

International Government

International Monetary Fund
World Bank

Federal Government

Army Corps. of Engineers
Bureau of Reclamation
Defense Communications Agency
Defense Intelligence Agency
Environmental Protection Agency
Freddie Mac
Joint Chiefs of Staff
Kennedy Space Center
NASA Headquarters
National Security Agency
Newport News & Shipbuilding
Social Security Administration
U.S. Air Force at Scott Air Force Base
U.S. Army
U.S. Navy

State/Local Government

State of California
State of New Jersey
State of New York-Dept. of Social Services
Dept. of Transportation
State of Missouri-Dept. of Highways
State of Oregon
State of Washington
City of Baltimore, MD-Housing Authority
City of Garland, TX
City of Hartford, CT-Dept. of Public Works
City of New York, NY
City of Seattle, WA
County of Los Angeles, CA
County of San Mateo, CA

Healthcare / Pharmaceutical

Baxter Healthcare Corporation
Columbia Presbyterian Hospital
GTE Health Services
Hospital Corporation of America
IHC Health Information Systems

McNeil Pharmaceutical
Merck & Co., Inc.
The Mount Sinai Hospital
New York University Medical Center
Shared Medical Systems Corp.
Smith Kline & French Laboratories
South Community Hospital
TDS Healthcare Systems
3M Health Information Systems

Insurance

Aetna Life & Casualty Company
Blue Cross & Blue Shield
Cigna Corporation
CNA Insurance Companies
Confederation Life Insurance Co.
Equitable Life Insurance Society of the United States
Fireman's Fund Insurance Company
Hartford Insurance Group
Metropolitan Life Insurance Co.
The National Life Insurance Co. of Vermont

Nationwide Life Insurance Co.
Sun Life Assurance Co. of Canada
The Prudential Insurance Co. of America
Travelers Insurance Co.
Transamerica Occidental Life Insurance Co.
USF&G Corporation

Manufacturing / Consumer & Industrial Products

Arco Oil & Gas Co.
Caterpillar Inc.
Ciba-Geigy Corp.
The Coca-Cola Company
Frito-Lay, Inc.
General Electric Co.
General Foods Corporation
Kimberly-Clark Corporation
Mobil Oil Corp.
Mosley Machinery Co., Inc.
Motorola, Inc.
Nabisco Brands, Inc.
Pepsico, Inc.
Torrington Co.
Westinghouse Electric Corp.

Retail

Ames Department Stores, Inc.
Hechinger
R.H. Macy & Co., Inc.
Stop & Shop Companies, Inc.

Transportation Services

DHL Worldwide Express
Federal Express Corp.
Ryder System, Inc.
United Parcel Service, Inc.

Utilities

Basin Electric Power Cooperative
Duke Power Co.
Niagara Mohawk Power Corp.
New York Power Authority
Pacific Gas Transmission Co.
Potomac Electric Power Co.
San Diego Gas & Electric Co.
TU Electric
West Texas Utilities
Wisconsin Power & Light Co.



Applied Business Technology Corporation

361 Broadway, New York 10013
212-219-8945 FAX 212-219-3925
TELEX 4948951ABTNY

Project Workbench is a registered trademark of Applied Business Technology Corporation.

CORPORATE HISTORY

*When a project
management
system wins 8 out
of 10 corporate
evaluations, you
know it's a winner!*

Christopher H. Murray and Danek M. Bienkowski founded Applied Business Technology Corporation in 1981. Pooling knowledge gained from many years of international management consulting, they began designing and developing microcomputer software to solve management problems. Their premier product, the Project Workbench® system, emerged in 1983. Currently, more than 45,000 systems are in use worldwide.

Many users are active in the large number of organizational, regional and international Project Workbench user groups which meet regularly to exchange new techniques, applications and "tricks of the trade." ABT currently has regional user groups from coast to coast and international groups in many European countries and Australia. ABT actively supports these groups and looks to them as a source of ideas and suggestions for product enhancements and changes that can be incorporated into future releases of Project Workbench software.

Headquartered in New York City, ABT markets Project Workbench software throughout the United States and Canada via a direct sales force and an extensive dealer network. Internationally, the system is marketed and supported by the Hoskyns Group, Ltd.,

London, England and Mitsubishi Research Institute, Inc. in Japan.

Today, ABT continues to be a market leader. Companies like AT&T, IBM, Citibank, Westinghouse, Ford Motor Company, Lockheed and many government agencies rely on Project Workbench software to plan, track and control their projects. Although the system is used by organizations of every description, users are concentrated in MIS environments and a number of vertical industries including banking, accounting, insurance, engineering, architecture, construction, aerospace and manufacturing.

Continuing to build for your future success

As Chris Murray and Danek Bienkowski noted in a recent letter to current users, "Release 3.0 gives us a platform from which future ABT products will be developed." Among our first offerings scheduled for 1989 release are several interfaces to various graphics and project management systems.

An interface to PlotTrak®, a graphics program from SofTrak Systems, Inc., allows Project Workbench users to plot high-quality project management graphics on a wide variety of popular plotters.



Project Workbench clients span the globe.

Other interfaces for moving project data from Time Line® project management software (Symantec Corporation) to the Project Workbench system facilitate a "painless" migration for Time Line users who want to take advantage of the Project Workbench system's greater power, flexibility and functionality.

Several manufacturers of other well-known and popular software systems for both PCs and mainframes have asked ABT to develop direct interfaces with their software so that the Project Workbench system could be used as their "scheduling engine." These interfaces are now being developed and will be announced as they become ready in future months.

In addition, we are currently translating Project Workbench software into French and German as part of ABT's continued effort to help our clients manage their business activities more efficiently and profitably worldwide.



Applied Business Technology Corporation

361 Broadway, New York 10013
212-219-8945 FAX 212-219-3925
TELEX 4948951ABTNY

Project Workbench is a registered trademark of Applied Business Technology Corporation. PlotTrak is a registered trademark of SofTrak Systems, Inc. Time Line is a registered trademark of Symantec Corporation.

ABOUT ABT



*The dawn
of a new age
in project
management*